

1. The course and extent of innervation of individual cranial nerves.
2. Location of the sensory nuclei of cranial nerves in the brainstem.
3. Location of the motor nuclei of the cranial nerves in the brainstem.
4. Location of the autonomic nuclei of the cranial nerves in the brainstem
5. Circulation of the cerebrospinal fluid.
6. Normal composition of the cerebrospinal fluid
7. Pyramidal system - structure and functions
8. Extrapyramidal system –structure and functions
9. Cerebellum - structure and functions.
10. Autonomic nervous system - structure and main functions
11. Superficial and deep sensations – types and pathways
12. Structure of the neuromuscular junction.
13. Myotatic reflex pathway
14. Structure of the vertebral column
15. Spinal cord - anatomical structures and tracts
16. Vascularization of the spinal cord

What are the names of the structures shown in the figures 1-15?

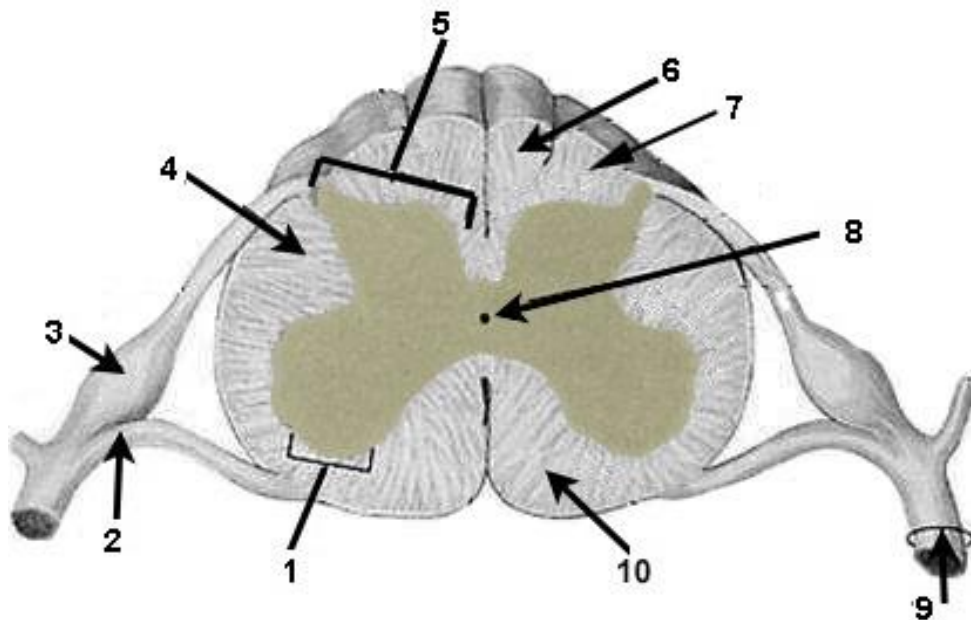


Fig.1 anatomical structures of the spinal cord

Fig.2 tracts of the spinal cord

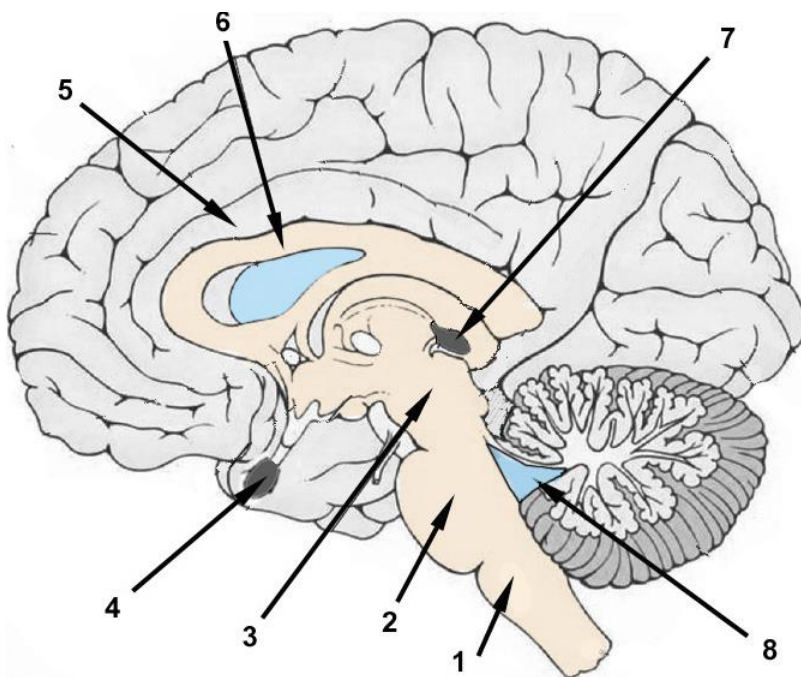
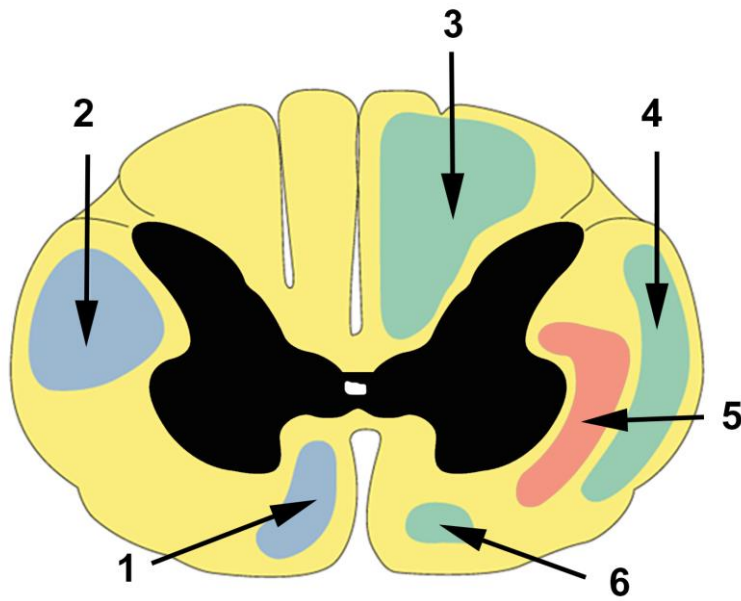


Fig.3

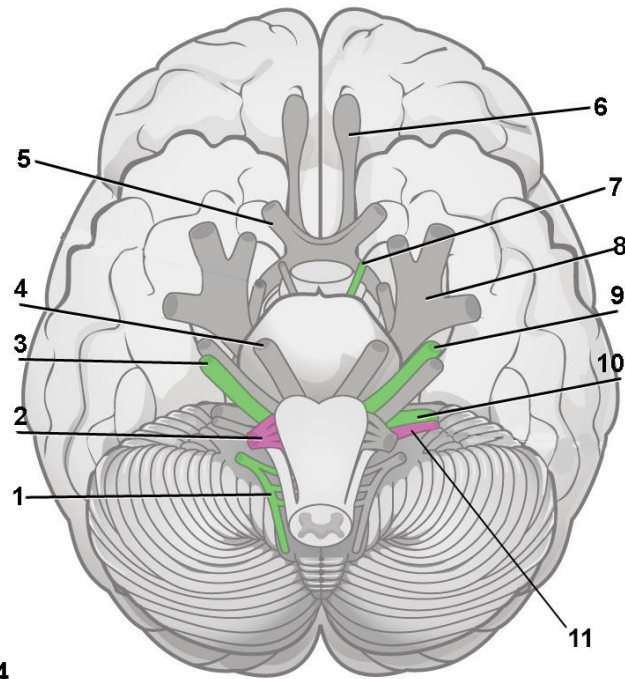


Fig.4

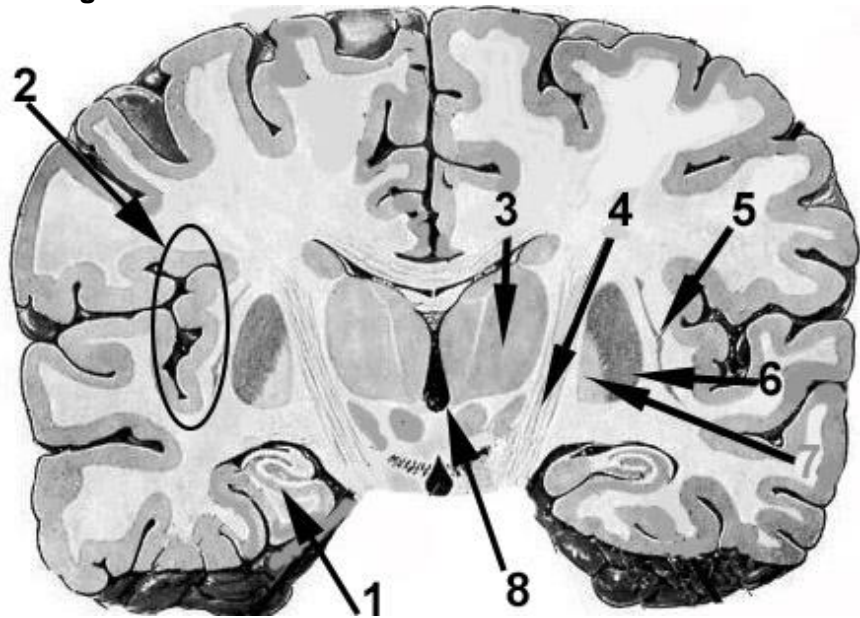


Fig.5

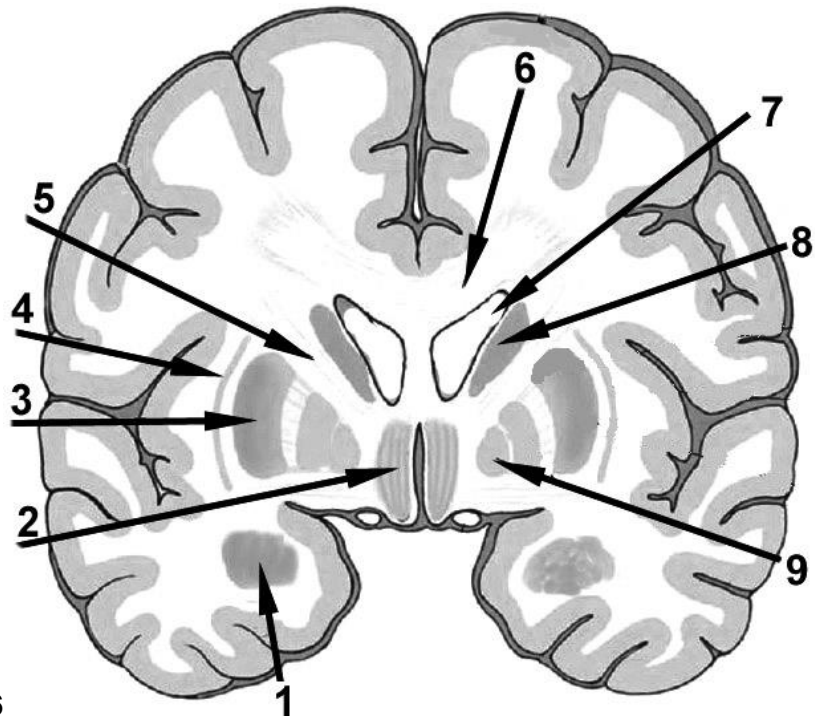


Fig.6

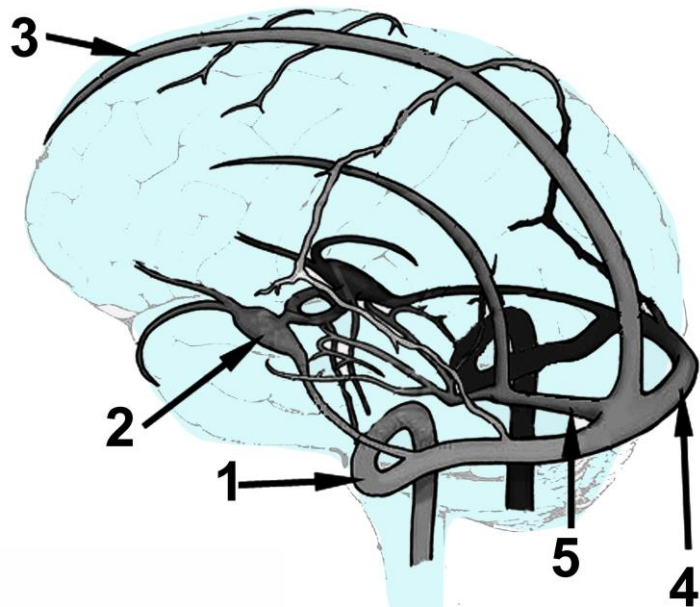


Fig.7 cerebral sinuses

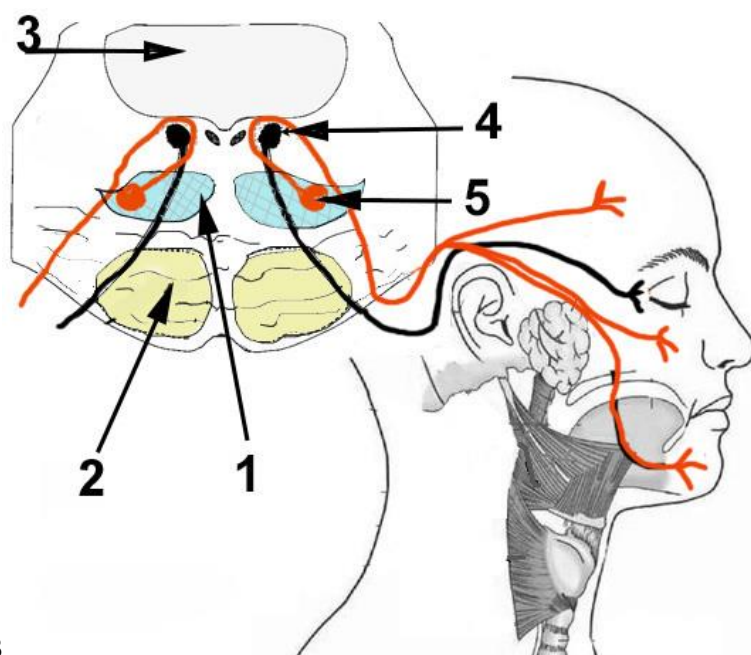


Fig.8

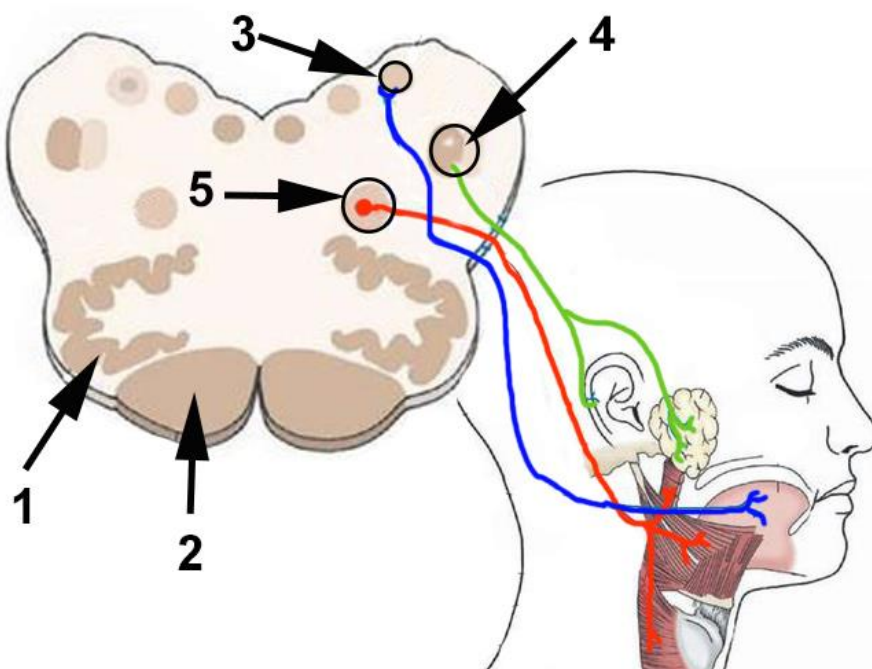


Fig.9

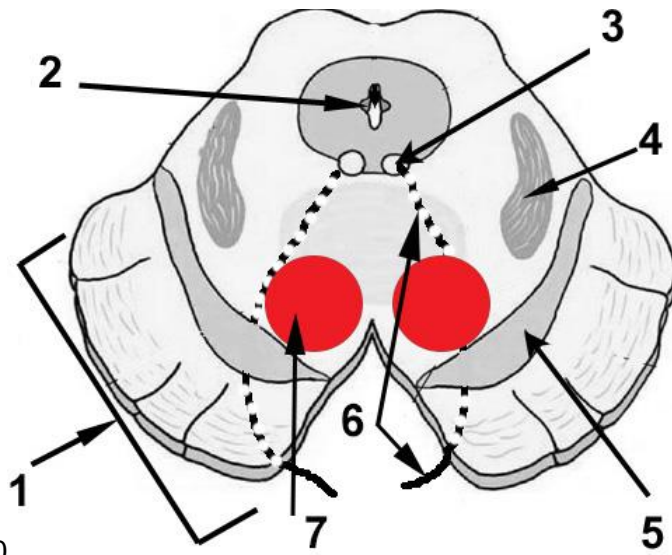


Fig.10

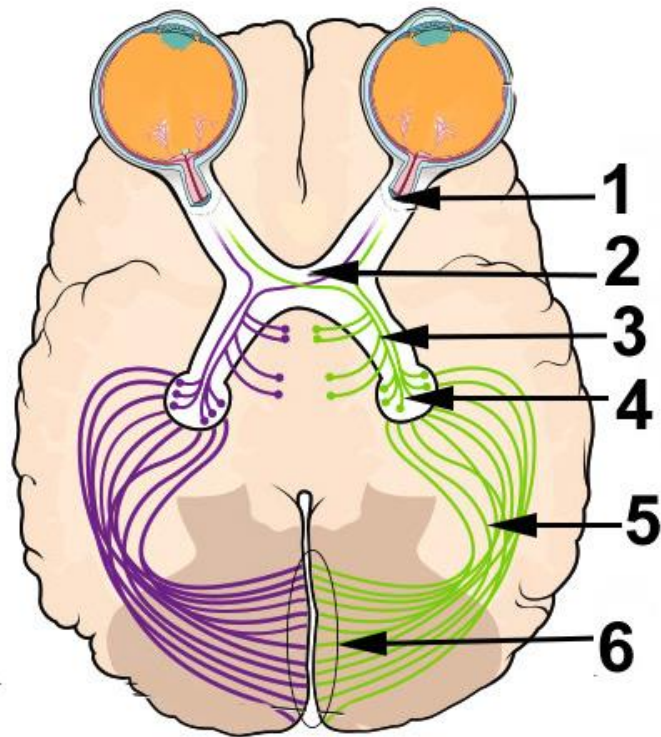


Fig.11

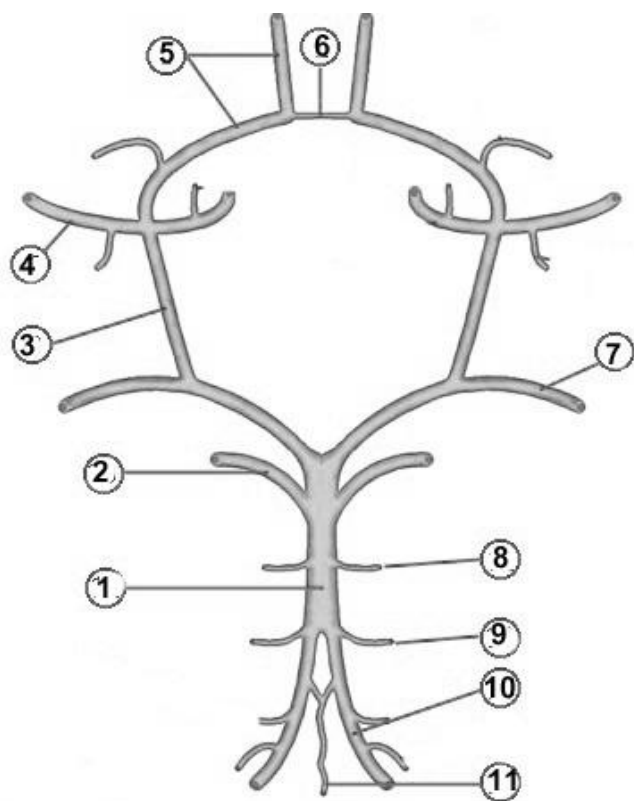


Fig.12

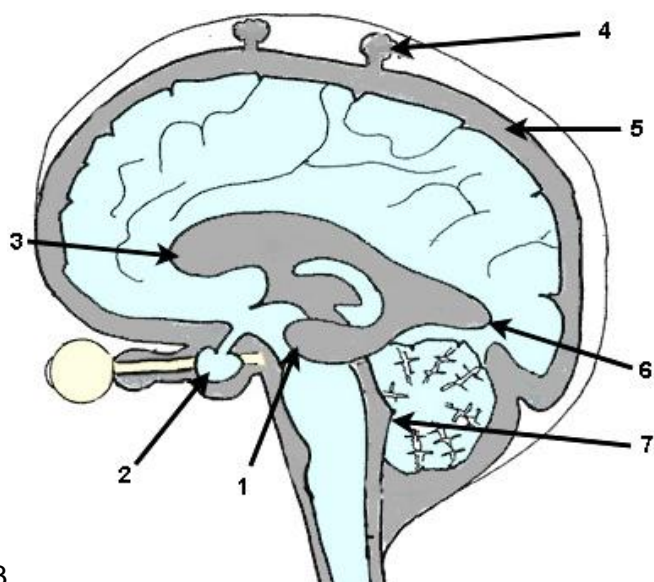


Fig.13

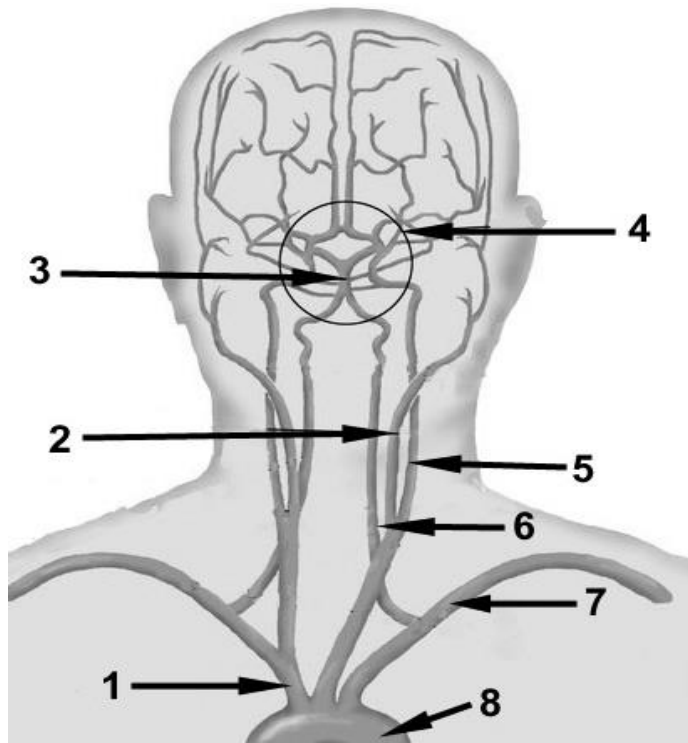


Fig.14

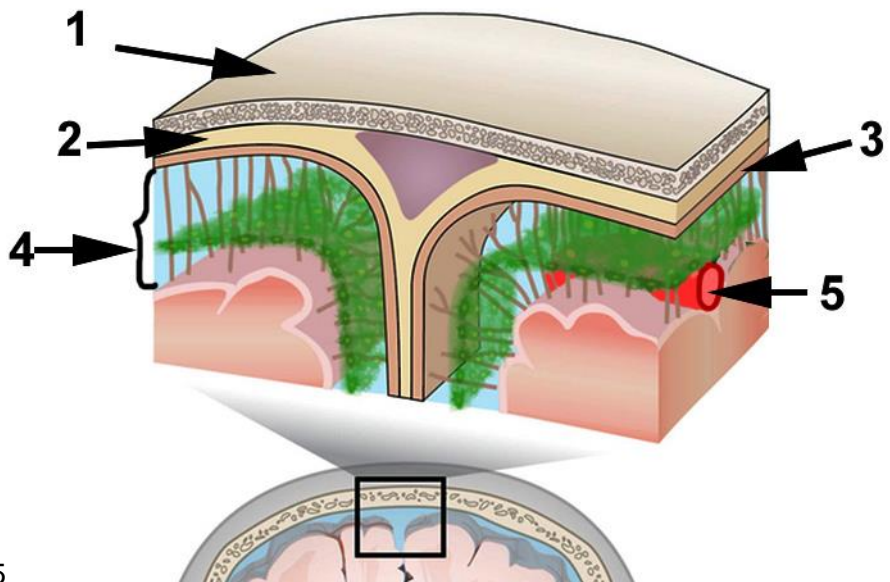


Fig.15